

Disclaimer:
This drawing is not to be reproduced, altered or published in part or in full without the expressed permission of Baldwin Design Consultancy Ltd.

Do not scale from this drawing, any discrepancies are to be reported to Baldwin Design Consultancy Ltd. prior to project commencement.

This document and its associated intellectual assets remain the property of Baldwin Design Consultancy Ltd. and no element of such is to be used beyond the contracted usage.



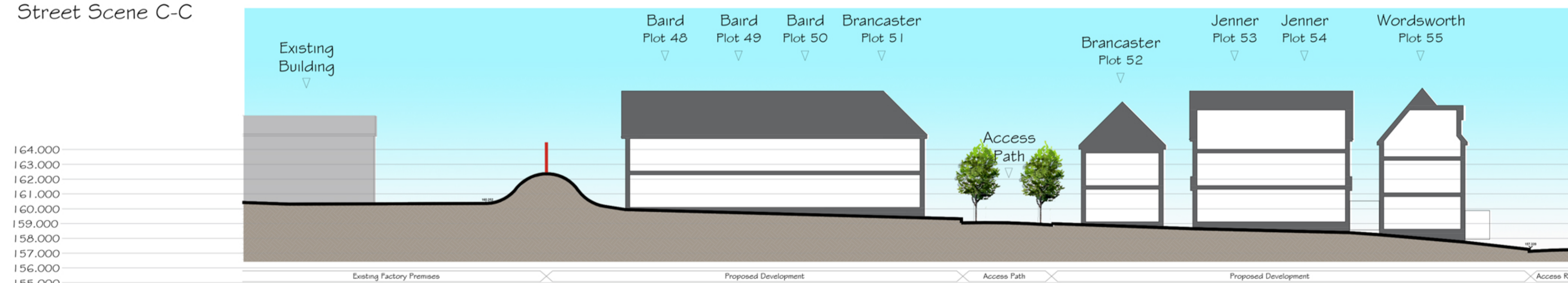
Street Scene A-A



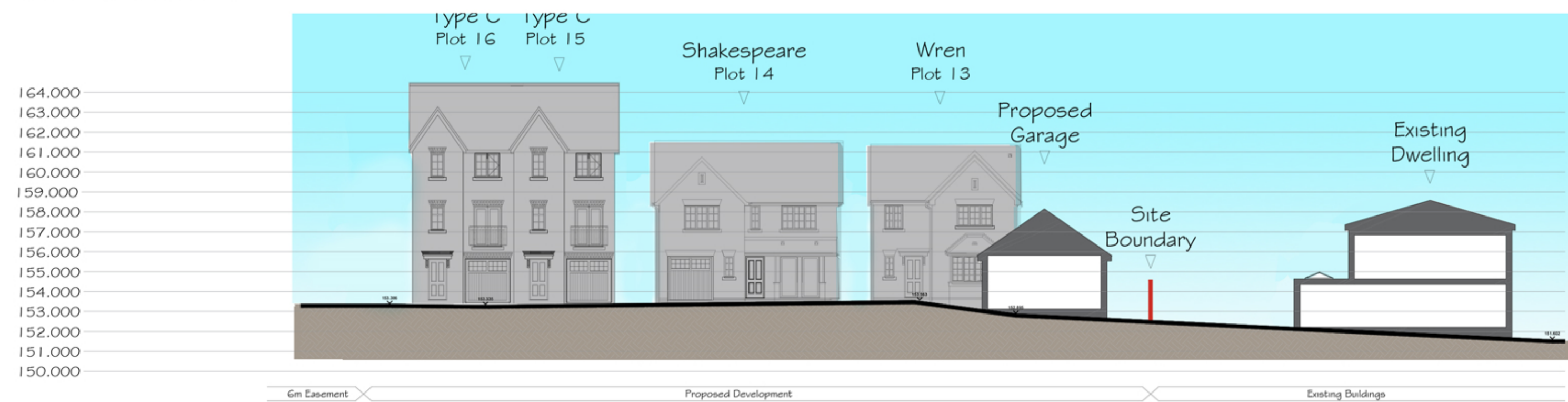
Street Scene B-B



Street Scene C-C



Site Section 1-1



Site Section 2-2

Site Section B-B



Locator Plan scale : n.t.s



Baldwin Design
Consultancy Ltd

Revision:
Rev B: Updated to match amended layout 24/09/18
Rev C: Updated to match amended layout 24/09/18

PLANNING DRAWING
Project Title:
Residential Development
Address:
Newton Business Park
Hyde

Drawing:
Street Scenes &
Site Sections
Drawing No:
WH/NBP/SS/01

Drawn:
WBK
Scale:
1:200
Ch'd:
-
Date:
20.12.17
Paper Size:
A1

Scale: 109-110, Lovell House, Birchwood Park, Warrington, Cheshire, WA3 9PW. Tel: 01925 747515. e-mail: g.baldwin@baldwindesign.net

Newton Business Park, Hyde